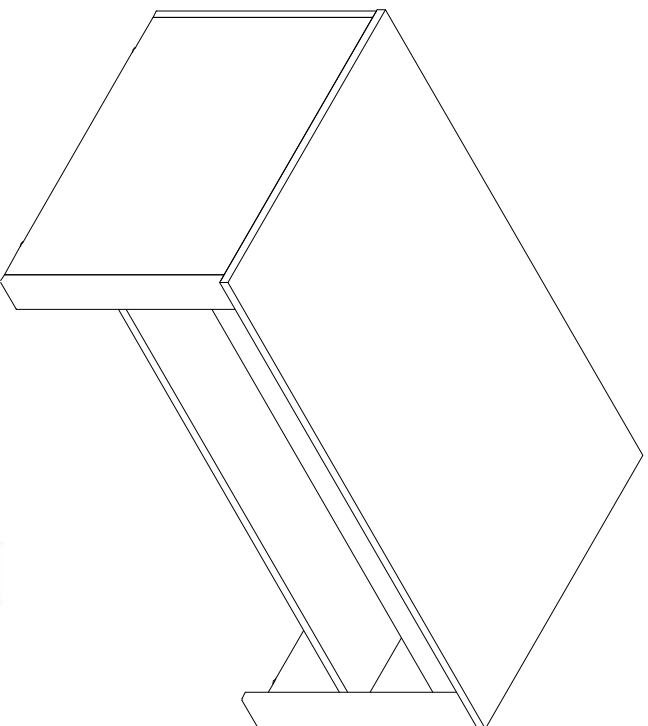


FALCO

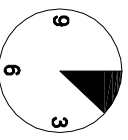
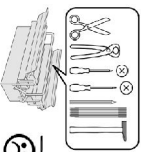
FL103



29.5.2017

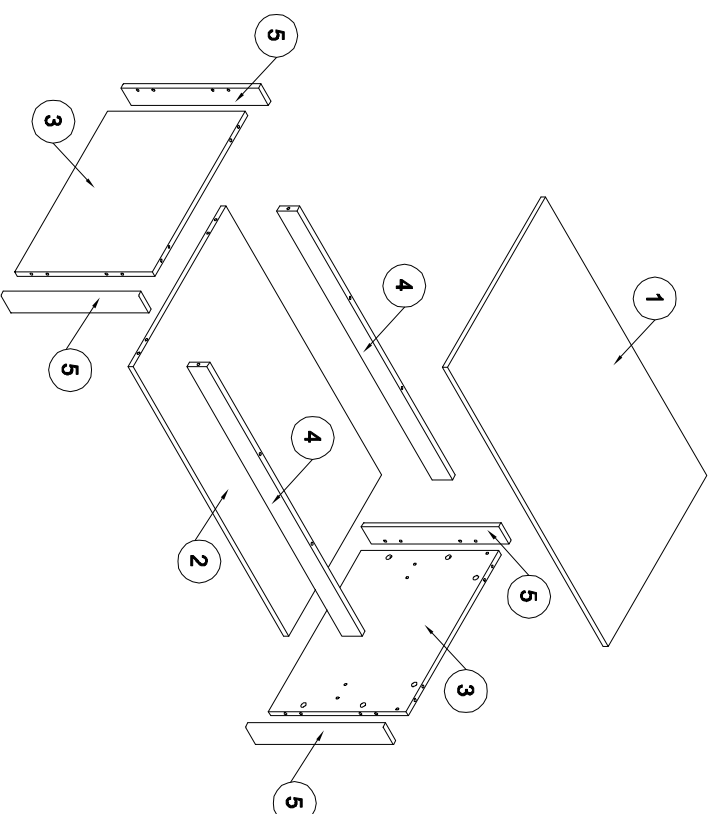
- D** Montageanleitung
- FR** Notice de montage
- NL** Handleiding voor de montage
- CZ** Montážní návod
- HU** Szerelési útmutató
- TR** Montaj talimatı

- GB** Assembly Instructions
- IT** Istruzioni di montaggio
- PL** Instrukcja montażu
- SK** Návod na montáž
- RO** Instrucțiunile de montaj
- RU** Инструкции по монтажу

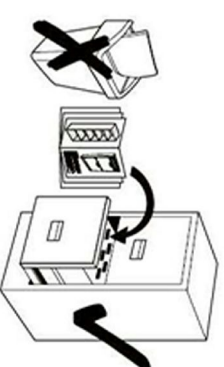
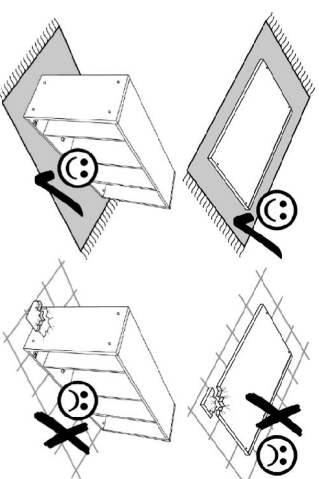


20 min.

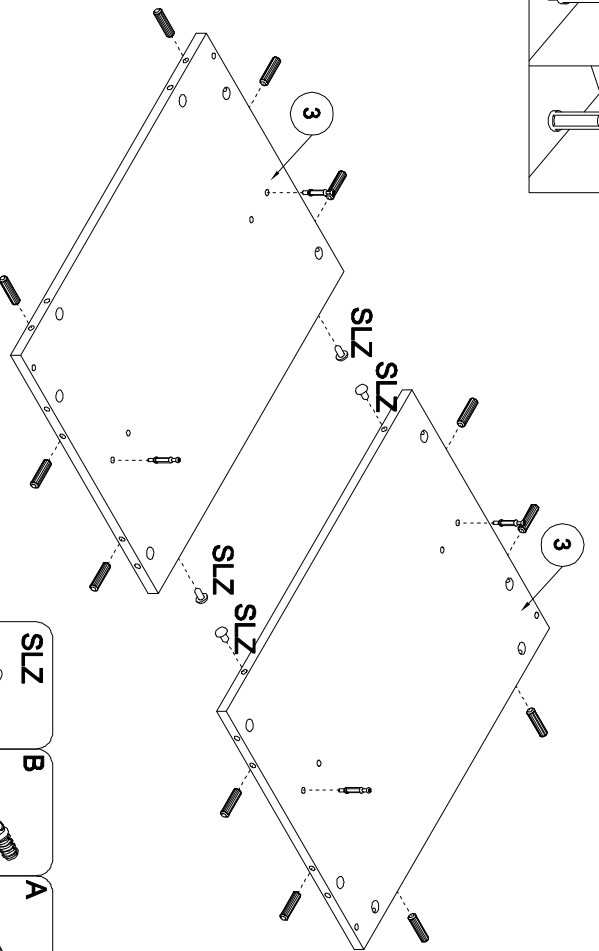
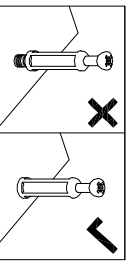
1



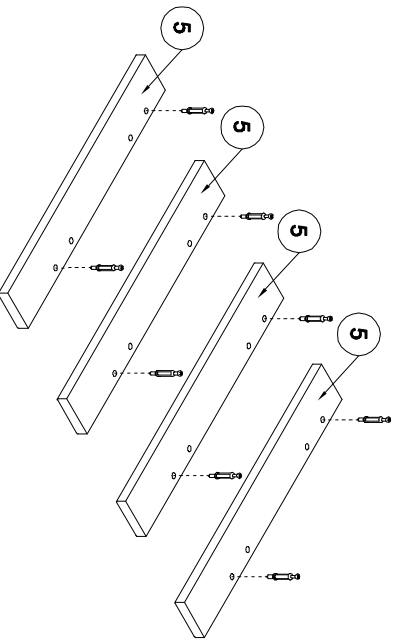
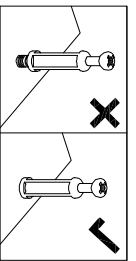
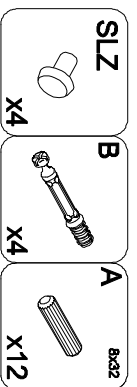
- | | | | | | | | | | | | | | |
|----|-------------|----|------------|-----|----------|-----|----------|-----|-------------|-----|----------|-----|----------|
| | GLUE | | SLZ | | B | | A | | Bx32 | | C | | Z |
| x1 | | x4 | | x16 | | x24 | | x16 | | x16 | | x16 | |



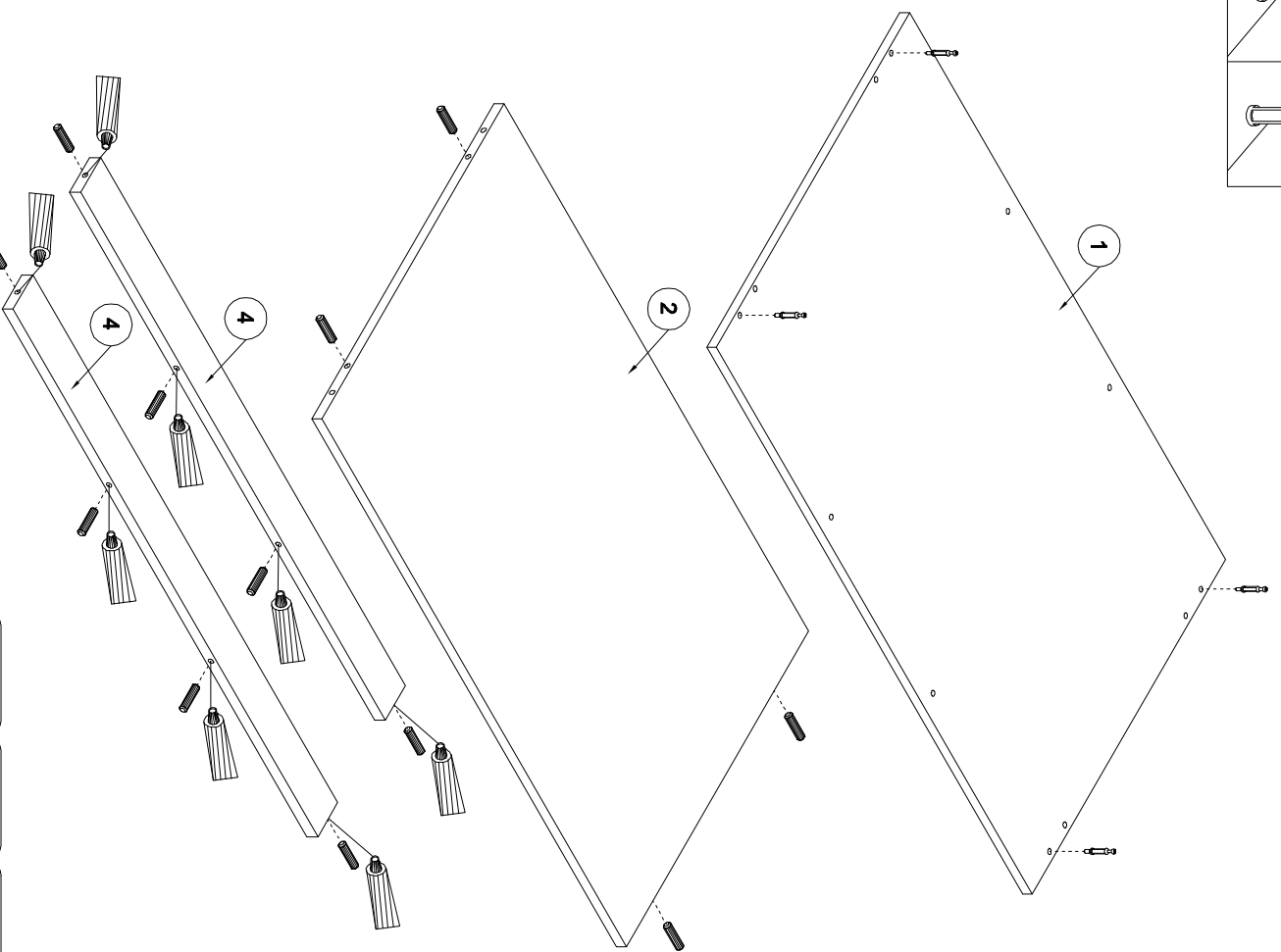
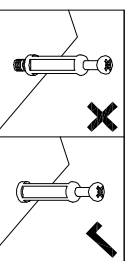
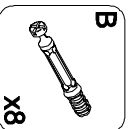
2



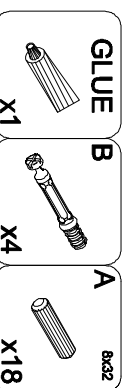
3



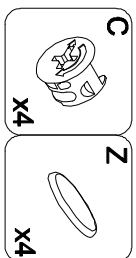
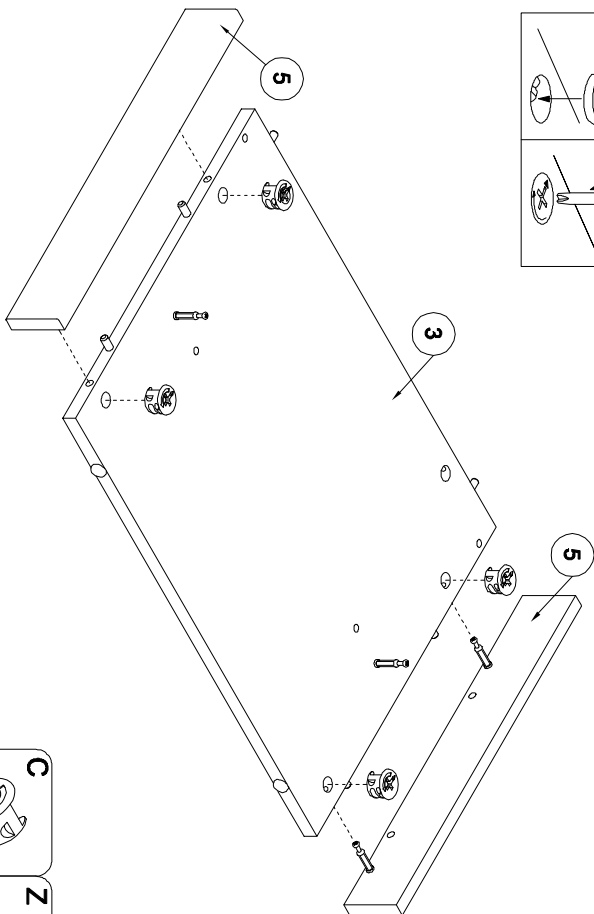
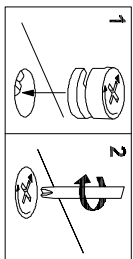
4



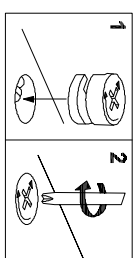
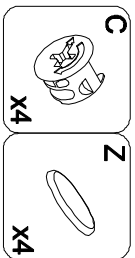
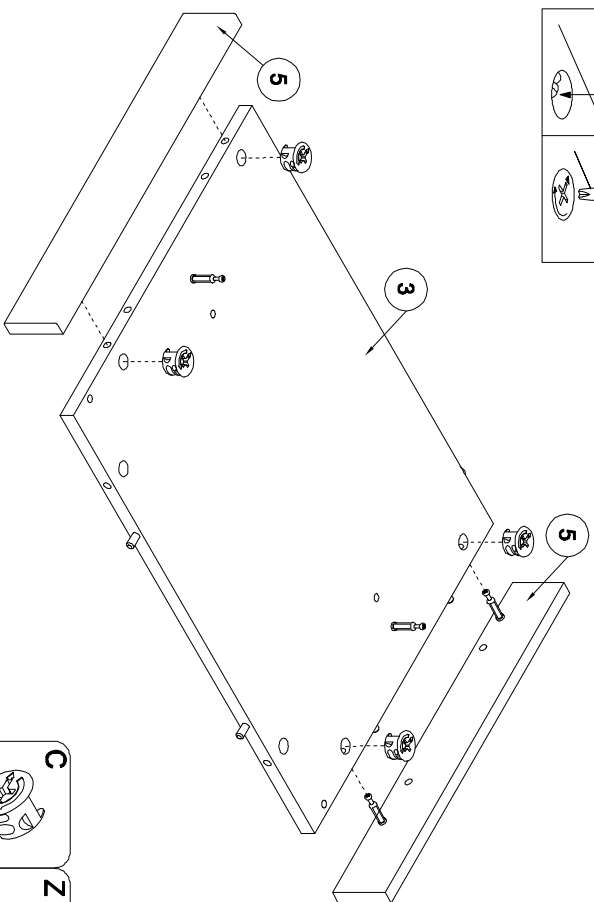
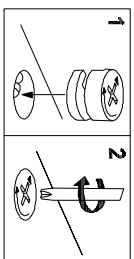
5



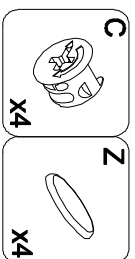
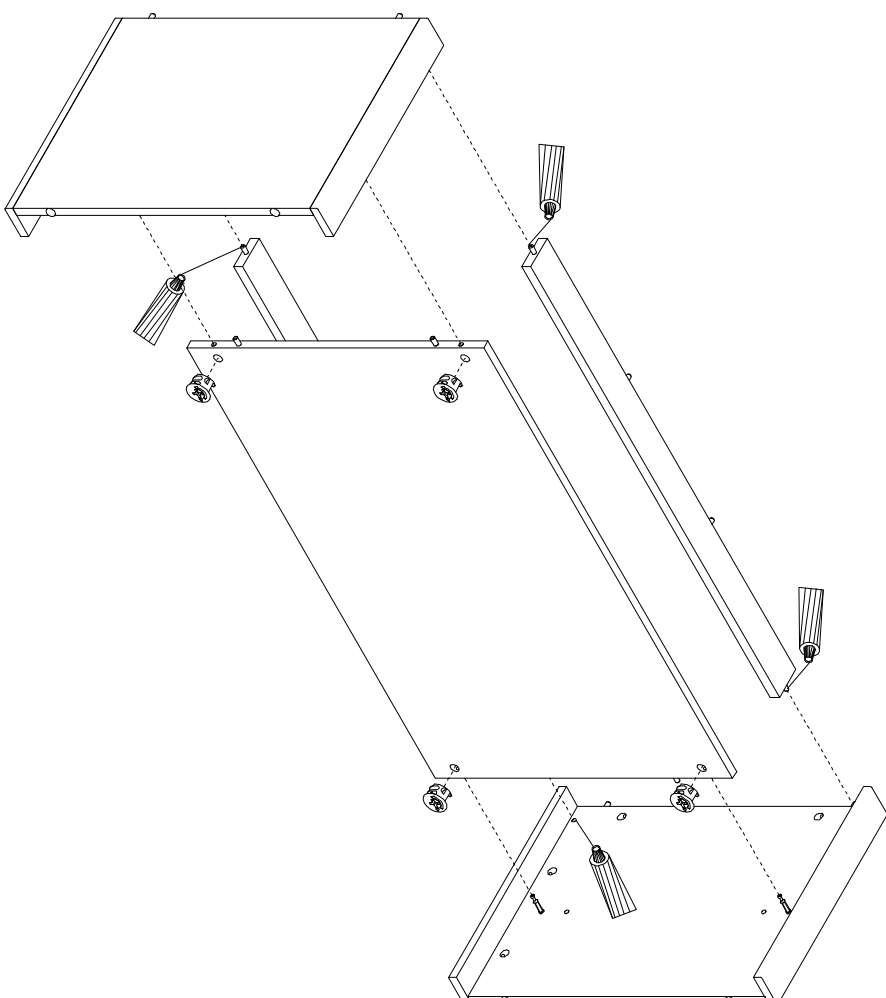
6

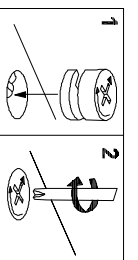
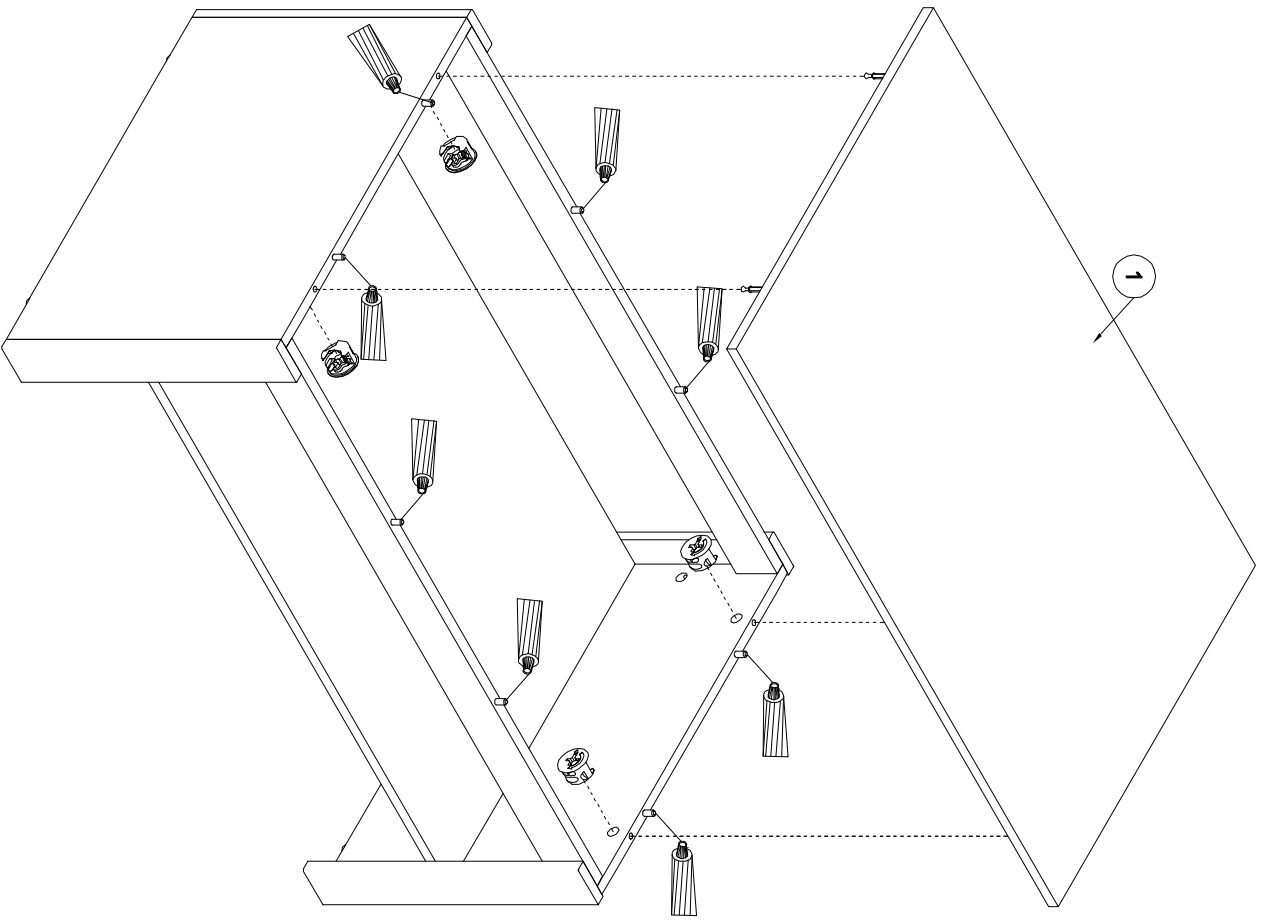


7



8





9

